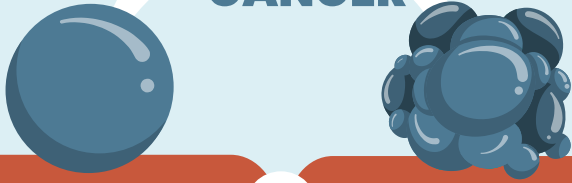


EP-NEC AT A GLANCE

NEUROENDOCRINE CANCER



NEUROENDOCRINE TUMOURS (NETS)^{1,2}

VS

NEUROENDOCRINE CARCINOMAS (NECs)^{1,2}

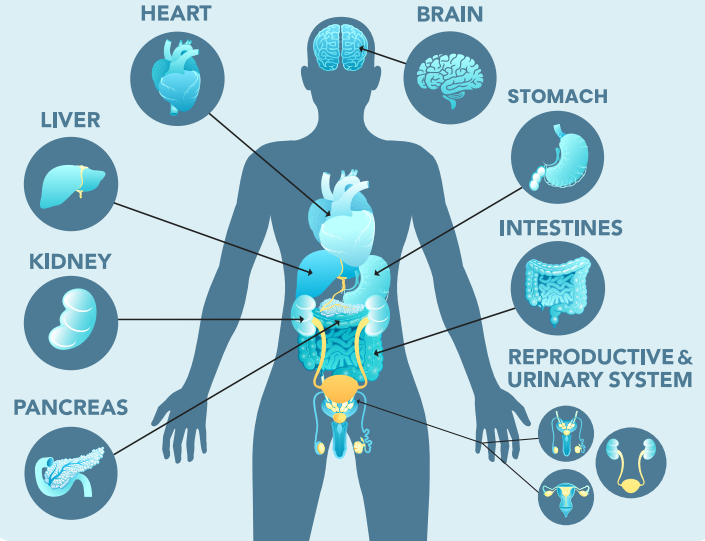
- Well-differentiated cells look more like normal neuroendocrine cells
- Slow to moderate growth
- Less aggressive, though metastasis can occur
- More commonly "hormone-secreting"
- Surgery is a potential primary intervention
- Generally has a more favorable prognosis

- Poorly differentiated cells look very abnormal
- Rapid growth (high grade)
- Highly aggressive with high potential for metastases
- Generally poorer prognosis due to aggressive nature

NECs frequently over-express DLL3^{3a}

Extrapulmonary Neuroendocrine Carcinomas (EP-NECs) in context¹

EP-NECs can develop from neuroendocrine cells^b in any organ



DIAGNOSTIC CHALLENGES

EP-NECs are characterised by late diagnosis, frequent misdiagnosis, and misunderstanding...



Delays in diagnosis



Inconsistent treatment pathways



Patient confusion

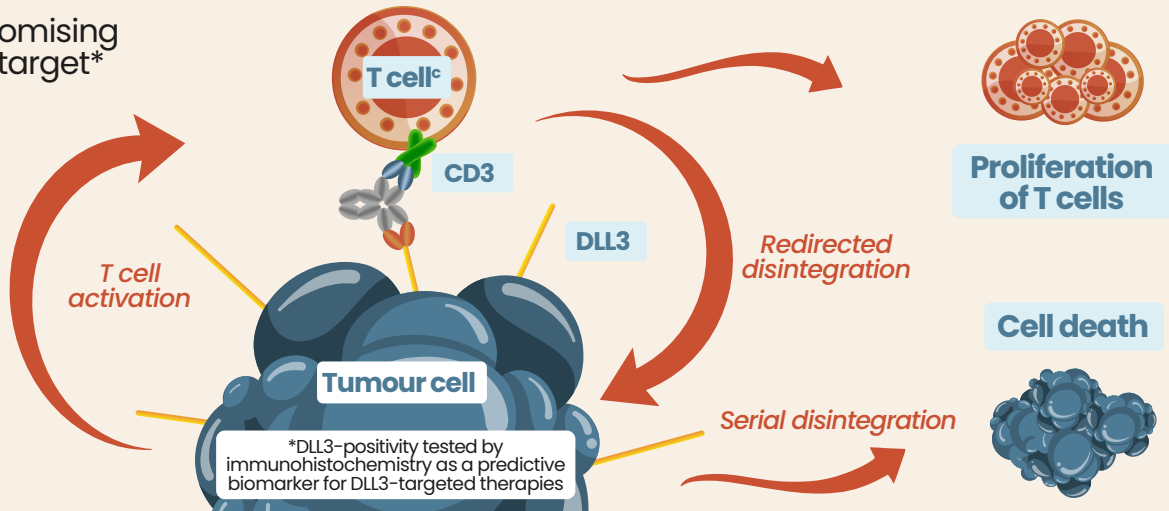
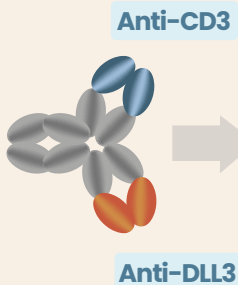


Limited specialist access

TREATMENT MODALITIES FOR EP-NECs ARE CURRENTLY LIMITED

DLL3^a is the most promising novel therapeutic target*

T cell engager⁴⁻⁶



*DLL3-positivity tested by immunohistochemistry as a predictive biomarker for DLL3-targeted therapies

SUPPORT NETWORKS ARE KEY

A diagnosis of EP-NEC can lead to feelings of loneliness and confusion among patients and care partners...



FOR FURTHER INFORMATION

1. Stumpo S, et al. J Clin Med. 2023;12:7715.
2. Sultana Q, et al. J Clin Med. 2023;12:5138.
3. Serrano AG, et al. NPJ Precis Oncol. 2024;8:268.
4. Giffin MJ, et al. Clin Cancer Res. 2021;27:1526-37.
5. Owen DH, et al. J Hematol Oncol. 2019;12:61.
6. Albayrak G, et al. Br J Cancer. 2025;133:1241-49.

^aBiomarker associated particularly with high-grade tumours

^bHormone-releasing cells

^cA type of cell in the immune system

This programme has been sponsored by Boehringer Ingelheim.

Affairs
Medical

